



LIFE TREE HOTEL - BODH GAYA

Breaking the Ground for Gospel at the Birthplace of Buddhism!



Attempting to share the Gospel in a non-confrontational manner through hospitality & service

A MESSAGE FROM THE PRESIDENT

Dear Prayer Partner,

I hope this letter finds you well. As you already know, India is the motherland of many religions, including Hinduism, Buddhism, Jainism, Sikhism, Animism, and many more. As we delve into the foundations of these ancient faiths, we are hopeful that our efforts will unravel the decaying elements and nourish the soil with the fertile seeds of the Gospel and the Holy Bible, enabling new roots to grow and flourish.

With this in mind, we are excited to share with you our vision for the Life Tree Hotel, located just one kilometer away from the Bodhi tree.



According to Buddhist tradition, this is the exact location where Buddha attained enlightenment, making it one of the most important pilgrimage sites for Buddhists around the world.

Our primary goal with the Life Tree Hotel is to create a space where pilgrims can come together, build relationships, and gradually grow in their faith in Jesus Christ. Through this project, we aim to share the Gospel message of salvation and use the saved souls to reach out to others who may be seeking spiritual guidance. We believe that by fostering fellowship and building strong relationships, we can create a cycle of spreading the Gospel to those who need it most.

Of course, we cannot do this alone. We need the support and prayers of people like you who share our vision for a more peaceful and harmonious world. We invite you to read the following pages to learn more about our project and how you can get involved.

Thank you for your time and consideration, and we look forward to hearing from you soon.

*Yours in His Vineyard,
Rt Rev Dr E.A. Abraham
President, Hope India Mission*



*Rt. Rev. Abraham Elavatta
President, Hope India Mission*

As we delve into the foundations

of this ancient faith, we are hopeful that our efforts will unravel the decaying elements and nourish the soil with the fertile seeds of the Gospel and the Holy Bible, enabling new roots to grow and flourish.



THE CONCEPT

BODH GAYA HOSPITALITY PROJECT

FROM LOCAL MINISTRY TO GLOBAL IMPACT

THE VISION

Rt. Rev. Abraham Elavatta began the Bodh Gaya (Birthplace of Buddhism) mission with a vision that was placed on his heart by God. It was in 2002 when he felt called to commence church work in Bodh Gaya with the intention of serving the local ministry and local believers. We started it as a church, and through our efforts, many local Buddhists came to faith through Hope India Mission. Over time, the congrega-

tion began to grow, and it even saw tourist guides who worked in Buddhist temples become our believers. Their first strategy was to reach Buddhists locally, and it succeeded in gaining followers from the local Buddhist community.

NEW OPPORTUNITIES, AND POSSIBILITIES

With Bodh Gaya being an international tourist destination, we realized that there

was much more prospect in sharing the Good News with Buddhist pilgrims who came from different countries, especially Asian countries. As we were ministering to locals, we couldn't find an option to share with the pilgrims, the major portion of people present in Bodh Gaya. That's when Rev. Abraham prayed to God, and two years ago, He gave him a vision to reach them globally from Bodh Gaya, which will allow us to share the Good News to the Buddhist world. The vision was to minister and reach through Hospitality Ministry by opening a hotel for pilgrims right from the birthplace of Buddhism!

THE STRATEGIC ADVANTAGE OF REACHING THE BUDDHIST WORLD AT OUR OWN DOORSTEP

The arrival of guests to our hotel presents a valuable opportunity to share the Good News of our Lord with a global audience, without the need for us to travel to them. We can make the most of our atmosphere and facilities to spread the message of faith to those who come to stay with us. But religious persecution and confrontation are prevalent in India, so giving out tracts or literature is no longer effective. We need to engage in one-to-one personal evangelism. The idea is to create an atmosphere of personal relationships and fellowship initially and try to lead them to Christ. By offering hospitality and building relationships with these visitors, we hope to share the Gospel and also train local believers in leadership to reach their neighbors and friends in a non-confrontational manner. If someone accepts the Lord in Bodh Gaya and goes back to their home country, whether it is Korea, Vietnam, China, Myanmar, Sri Lanka, Japan, or Thailand, will be going back as a missionary. This is about ministering and reaching them locally here and making a global impact right from the birthplace of Buddhism.

ONE PROJECT, COUNTLESS BENEFITS: *A LOOK AT THE MULTIFACETED OUTCOMES*

1. Reaching locally and Globally and developing hundreds of Global Missionaries from Buddhist Background: The project has the potential to plant seeds of the Gospel in

the hearts of many Buddhist pilgrims and provide them with an opportunity to consider the message of salvation through Jesus. Even if a small percentage of these pilgrims choose to follow Jesus, it could lead to the salvation of many people from a Buddhist background.

The proposed project aims to reach and devel-

The Mahabodhi Temple in Bodh Gaya where Buddha is believed to have attained Enlightenment is just one mile from the proposed project location



op hundreds of Global Buddhist Missionaries by providing them with the opportunity to stay at the hotel and participate in the hospitality ministry. They will be able to learn about Christianity and the love of Christ, and hopefully return to their communities to share the Gospel, leading to outreach and evangelism.

2. Income generation: The income generated from the hotel will be used to support the expansion and growth of the ministry further. This fund will be vital to cover expenses associated with running the operations, including salaries, utilities, and other administrative costs. By utilizing the income for the ministry's growth and expansion, the hotel will help to make a lasting impact on the lives of those it serves.

3. Job opportunities: The proposed project will provide employment opportunities to local believers. Training and equipping local Christians to serve as staff at the hotel and the hospitality ministry, the project could provide a source of income and employment for these individuals. This could help to improve their financial stability and enable them to support their families. Local believers who are trained and equipped to serve at the hotel and ministry could potentially take on leadership roles and use their skills and expertise to benefit the church and community.

4. Jobs help to increase the tithe of the local church: The proposed project has the potential to increase the local church's tithe by providing job opportunities to believers. As individuals earn an income, they may feel a greater sense of obligation to give back to the church and support its mission. This could result in increased financial resources for the church that could be used for outreach, community service, and other initiatives aimed at furthering the expansion of the Lord's Kingdom. Additionally, the income generated by the project could be used to construct new churches, daughter churches or other facilities that are necessary to support the growth of the church. These facilities could include worship centers, classrooms, or other meeting places for believers to gather and worship.

5. A model ministry for other missions to follow: The proposed project will serve as a model ministry for other missions to follow in reaching out to people in their respective fields of interest with the love of Christ. This model ministry aims to bring together the principles of hospitality, community service, and evangelism to provide a unique outreach opportunity to the Buddhist world. By demonstrating the effectiveness and success of this model, other missions may be encouraged to pursue similar projects in their own fields.

6. Community Service: In addition to sharing the Gospel with Buddhist pilgrims, the project also aims to provide social and humanitarian services to the local community in Bodh Gaya. This could include providing assistance to those in need, such as through education and healthcare programs. By providing these services, the project could help to improve the lives of people in the community and demonstrate the love of Christ in a practical way.

ELEVATING THE PROJECT TO A GLOBAL CHRISTIAN RESOURCE AND TRAINING CENTER

In the future, as the number of global Buddhist contacts increases, we hope to develop our hospitality ministry in Bodh Gaya into a global resource and training center for these new believers. We dream of elevating this project into a permanent training and resource center that specifically caters to the needs of the Buddhist world. Our vision is to provide training and resources for new believers, enabling them to grow in their faith and equip them to share the Gospel in their communities. This center would have a significant impact on the Buddhist world, where there is a great need for Christian resources and training. We believe that through this center, we can help facilitate a cycle of evangelism through new believers,

and play a significant role in spreading the Good News to the Buddhist world.

PROJECT UPDATE

MILESTONES ACHIEVED

Our Hospitality project in Bodh Gaya is an exciting new venture that we are prayerfully pursuing. We have found a property with a 20000 sq ft building and 1.5 acres of land, just one mile away from the main pilgrim temple. The total cost of the building and land is \$1875,000, and we are currently seeking financial support to acquire it. Additionally, we estimate that we will need an extra \$20000 to furnish the building and \$20000 for furniture

and other necessities.

OTHER UPDATES

We have already completed a detailed financial plan and budget for the construction and operation of the hotel, as well as a feasibility study to determine the expected occupancy rates and revenue. We are confident in the sustainability of the project and are ready to move forward. To attract Buddhist pilgrims to the hotel, we have developed a marketing and outreach plan, which includes targeted advertising and pro-

motion, and we have established partnerships with local tour operators and other organizations that work with Buddhist pilgrims.

We are training a group of people in hotel management and hospitality care at our Theo Tech College, Hope India Mission's Leadership Training Institute, to take on the responsibility of managing the property in the future. We will also develop a training program for staff members (Mostly our trained local believers) to ensure they are equipped to effec-



The proposed building and plot. The building requires exterior & interior renovation

tively share the Gospel with guests and build relationships with them in a non-confrontational manner.

Finally, we are developing a plan for implementing various types of ministry programming, such as Evangelism Parties, Bible studies, and evangelistic events, tailored to the needs and interests of the specific groups of pilgrims who will be staying at the hotel. We are excited about the potential impact this project could have on the Buddhist world, and we are committed to pursuing it with diligence and faith.



A DETAILED PROJECT PLAN

We propose to establish a hospitality ministry model through a hotel at the birthplace of Buddhism in Bihar, India, with the intention of serving as a hub for Christian outreach to Buddhist pilgrims from all over the world. By offering hospitality and building relationships with these visitors, the ministry hopes to be able to share the Gospel and also train local believers in leadership in order to reach their neighbors and friends in a non-confrontational manner.

NAME OF THE PROJECT :	BODH GAYA HOSPITALITY MINISTRY – REACH THE BUDDHIST WORLD
PROJECT GOAL:	Reach the Buddhist world locally and globally
PROJECT OBJECTIVE:	Establish a hotel for pilgrims and create a Hospitality Ministry Model in Bodh Gaya – India, the birthplace of Buddhism.
PROJECT BENEFICIARIES:	HOPE INDIA MISSION – through INCOME GENERATION Buddhist guests and the souls won (Local & Global) Local believers (Thorough Employment)
PRIMARY CONTACT PERSON:	Rt. Rev. Dr. E.A. Abraham, President – Hope India Mission
EXECUTING AGENCY:	Hope India Mission, (A 501(c) in USA) Hope India Mission 1403 Winchester Road Decatur, IN 46733



ABOUT HOPE INDIA MISSION

Hope India Mission is blessed to have 1110 missionaries serving in its 58 central churches and hundreds of house churches, which consist of more than 25,000 believers in nine states in North India. Our various ministries include pioneer evangelism and church planting, a Bible college with 17 branches in 5 Indian states, orphanages (Barnabas Home for boys and Esther Home for girls), social empowerment projects such as literacy programs for the poor, safe drinking water projects for thirsty villages, micro-business initiatives for

women's empowerment, educational projects including a network of formal Christian schools with 7 campuses and over 3,500 students (99.5% are from other faiths), hundreds of children in non-formal schools, and Christian bookshops and reading rooms.

WHY BODH GAYA?

It takes the lead in Bihar tourism revenue

Bodh Gaya is a major Buddhist pilgrimage site, as it is believed to be the place where Gautama Buddha attained enlightenment and

Buddhism was born. None of the Christian missions have a presence here. Each year, thousands of Buddhist pilgrims visit Bodh Gaya to pay their respects and seek spiritual guidance. This presents an opportunity for Christians to share the message of Jesus Christ with these visitors in a respectful and non-confrontational manner. By establishing a hotel in this location, we can reach a significant number of pilgrims, as well as train and equip local believers to share the Gospel with their neighbors and friends.

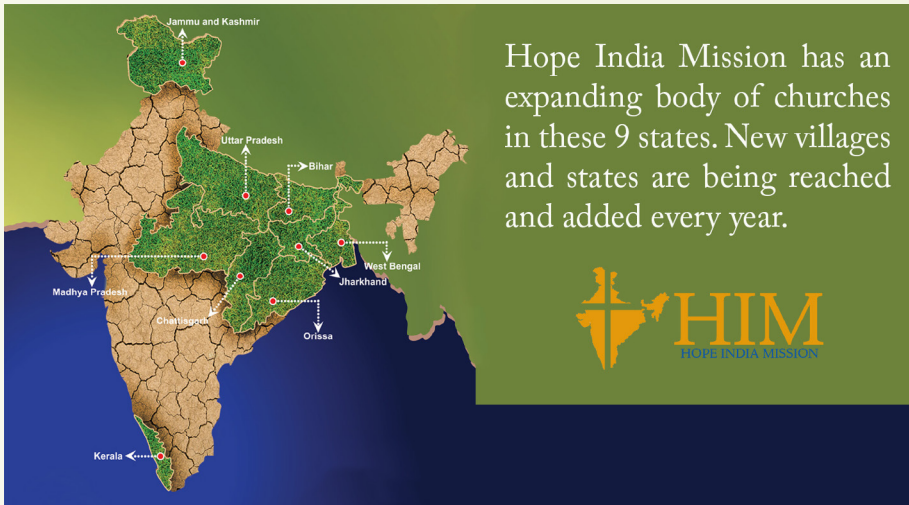
SIGNIFICANT INCREASE IN FOREIGN TOURISTS VISITING BIHAR

Supportive factor in feasibility

According to the Bihar State Tourism Development Corporation, the number of foreign tourists visiting the state has seen a 12-fold increase from 85,673 in 2001 to 1,090,000 in 2019. In 2019, over 680,000 foreigners visited the Rajgir district alone where Bodh Gaya is located.

WHY NO MISSIONS WERE INTERESTED IN BODH GAYA?

Despite its rich spiritual history and signif-



ince to both Jainism and Buddhism, Bodh Gaya was often overlooked by missionaries due to its reputation as merely a tourist destination. However, this ancient city, once the capital of the kingdom of Magadha, holds much more than just its stunning ceramic artifacts dating back to 1000 BC. It is believed by Buddhists that Gautama Buddha spent 12 years in Bodh Gaya before achieving 'enlightenment' and establishing Buddhism. It is also believed to be the birthplace of the 20th Jain Tirthankar, Mahavira of Jainism. And Buddha taught and meditated in and around Bodh Gaya during the 5th and 6th centuries BC.

OUR ADVANTAGES

*'An expanding body of churches and houses
churches grown out of Bihar'*

We are involved in active evangelism and church planting in Bihar for the past 40 years with a mission of reaching the un-reached. Our ministry is now present in nine North Indian States with a worker strength of 110 full time evangelists and pastors serving their respective communities. Various capabilities of our ministry are focused on "Whole Gospel

for the development of the whole personality". For the past 40 years, it has been our mission from the Lord to break up unplowed ground and bring the message of Jesus to unreached villages in North India. Despite the challenges, God has helped our team minister to diverse ethnic communities in nine states.

Hope India Mission's motto is 'Reaching the Unreached & Telling the Untold'. Because we are called to Reach the Unreached, these are some of the most unreached and untold people around the world. Direct evangelism is not possible with them, so through the Hospitality Ministry at our hotel, we can touch many lives. The hotel is well connected by road to other cities and the airport, and has additional benefits. The main season for Buddhist tourists is between October and March, while the rest of the year, Hindus from all over India come here to offer special Poojas (worship/homage) for their ancestors. They consider this place to be holy and a place of salvation, providing an opportunity for business throughout the year.

PROJECT GOALS & OBJECTIVES

The ultimate goal of this project is to establish a hospitality ministry model to share the message of Jesus Christ with Buddhist pilgrims arriving in Bodh Gaya in a way that is sensi-



tive to their cultural and spiritual beliefs. This will be achieved through the following specific objectives:

1. Establish a hotel and hospitality ministry in Bodh Gaya that provides accommodation and other services to Buddhist pilgrims.
2. Train and equip local Christians to serve as staff at the hotel and ministry.
3. Utilize the hotel and ministry as a platform for sharing the message of Jesus Christ with Buddhist pilgrims through conversations, Bible studies, and other activities.
4. Work closely with the local community and Buddhist leaders to ensure that the ministry is respectful and non-confrontational and develop a mutual understanding and respect for each other's beliefs and practices and develop partnerships.

METHODOLOGY

1. Identify a suitable location for the hotel, taking into consideration factors such as accessibility, safety, and proximity to major tourist attractions. (Process already completed)
2. Will develop the hotel for our guests, in-

cluding the provision of clean and comfortable rooms, as well as amenities such as a restaurant, a chapel, and a library.

3. Will train and hire a team of dedicated and compassionate local believer staff who will embody the love of Jesus Christ in their interactions with guests.
4. Will establish partnerships with other Christian missions to provide opportunities for guests to engage with the local Christian community and to participate in Christian activities.
5. Will provide Christian literature and resources in the hotel lobby and guest rooms, engage guests in conversation about their faith and beliefs in a respectful and non-confrontational manner and invite them to evangelism parties and Bible study etc.

SCOPE OF THE PROJECT

The purpose of this project is to establish a hospitality ministry at the birthplace of Buddhism in Bihar, India, in order to reach thousands of Buddhist pilgrims that come from all over the world with the love of Jesus Christ. Bihar, India is a major hub for Buddhist pilgrims from all over the world, as it is the birthplace of Buddha and home to several important Buddhist holy sites. Through this ministry,

we aim to provide a comfortable and safe environment for these pilgrims to relax, as well as to share the Gospel of Jesus Christ with them. This project will involve the construction and operation of a hotel at the birthplace of Buddhism, as well as the training and equipping of local believers to serve the Buddhist pilgrims arriving in Bihar. In addition, we will coordinate local and global ministry efforts among Buddhists from the birthplace of Buddhism. The long-term sustainability of the project will be ensured through a finance plan.

In addition to the Hospitality Ministry, we will have a travel agency project (we already have the license for a Travel Ministry called 'Grace Travels'), so that we can take care of the travel and taxi needs of our guests. By staying connected with them, we will be able to make a bigger impact in their lives. Without contact, there is no impact.

PROJECT PREREQUISITES

We are already prepared for step #1

1. We have found a property with a 20000 sq ft building (not fully furnished) and 1.5 acres of land. The total cost of the building and land is \$1875,000. It is a beautiful location just one mile away from the main temple, and we are praying for the financial support to ac-

quire it.

2. An additional \$20000 will be needed to furnish the building, and \$20000 for furniture and other necessities.

3. We are training a group of people in hotel management and hospitality care at our Theo Tech College (Hope India Mission's Leadership Training Institute) to take on the responsibility of managing the property in the future."

4. **Financial planning & Feasibility Study:** Following the approval of the Board of Directors of Hope India Mission, a detailed financial plan and the budget for the construction and operation of the hotel have been made ready. A feasibility study was conducted by our office team to determine expected occupancy rates and revenue in order to determine the sustainability of the project.

5. **Marketing and outreach plan:** In order to attract Buddhist pilgrims to the hotel, the ministry is prepared for a marketing plan that includes targeted advertising and promotion. We have already partnered with local tour operators and other organizations that work with Buddhist pilgrims in order to build partnerships and promote the project.

6. **Staffing and training:** Hope India

Mission already has a growing congregation of local believers in Bodhi Gaya who can be trained to hire as staff members and be committed to the mission of the ministry. We will develop a training program for staff members to ensure that they are equipped to effectively share the Gospel with guests and to build relationships with them in a non-confrontational manner.

7. **Ministry programming:** In order to effectively reach out to Buddhist pilgrims, our ministry will be developing a plan for implementing various types of ministry programming, such as Evangelism Parties, Bible studies and evangelistic events in a non-confrontational manner. It will be important to consider the needs and interests of the specific groups of pilgrims who will be staying at the hotel in order to tailor the programming to their needs.

MORE SNAPS OF THE PROPOSED LAND & BUILDING



SIGNIFICANCE OF BODH GAYA AND NEARBY NALANDA DISTRICTS

TWO UNESCO WORLD HERITAGE SITES NEARBY

The Mahabodhi temple & the Bodhi tree are UNESCO World Heritage Sites where Buddha is believed to have attained enlightenment & established Buddhism. It is a prime tourist attraction for foreign visitors. It's believed that the temple was first built in the 3rd century. However, much of it was destroyed by Muslim rulers in the 11th century.

RUINS OF THE OLDEST RESIDENTIAL UNIVERSITY IN THE WORLD

Another UNESCO World Heritage Site, (70 kilometers away from Bodh Gaya) Nalanda was once an important center of learning from the fifth century BC to 1200 AD. It is considered to be the oldest residential university in the world. Although a Buddhist resource center, Nalanda also taught secular subjects and attracted students from all over Asia. Much of the knowledge of Nalanda comes from the writings of pilgrim monks from China, such as Xuanzang and Yijing, who traveled to the Nalanda in the 7th century. The ruins of Nalanda is a major tourist attraction in Rajgir.



Bodh Gaya has its main source of income from religious tourism



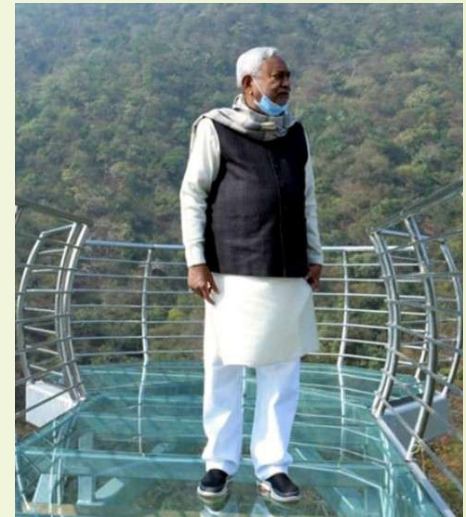
An artist's impression of under-construction Nalanda University.



Surya Kund hot springs is a Hindu pilgrimage site where water from seven different springs merge



The ruins of the Nalanda university is now a UNESCO World Heritage Site



EMERGING GROWTH AND DEVELOPMENT IN BODH GAYA AND NALANDA DISTRICTS

NEW NALANDA INTERNATIONAL UNIVERSITY, RAJGIR (NEAR BODH GAYA)

To emulate the famous ancient Nalanda University, the Government of India has set up the new Nalanda International University (a research-intensive institution) next to its ruins in Rajgir. The university began its first academic session on September 1, 2014. Its original faculty consisted of world-class professors from some of the top universities across the globe. Initially set up with temporary facilities in Rajgir, a massive modern campus is expecting completion. The university has been designated as an "international university of national importance" by the Parliament of India. The original university, widely considered to be the greatest of all ancient monasteries and the world's first residential institution, functioned from the 5th century BC to 1200 AD. Nalanda University, at its peak, housed 10,000 students from all across Asia. Some famous personalities associated with the original university include Lord Buddha, who preached at Rajgir centuries earlier, and the legendary Buddhist master Atisa. Hope India Mission has healthy local congregations around the ruins of the university.



The modern campus of the Nalanda International University will look like this following its completion.



THE ORDNANCE FACTORY, RAJGIR

Ordnance Factory in Rajgir Manufactures and possesses war ammunitions, missiles, guns and rockets with 200 years experience in defence

production. It is an industrial organisation, functioning under the department of Defence Production of Ministry of Defence, Government of India. They are experts in testing, logistics, research, development and marketing of a comprehensive product ranges. Ordnance Factory is the world's largest government-operated ammunition production organisation, and the oldest organisation run by the Government of India.



BIHAR POLICE ACADEMY, RAJGIR

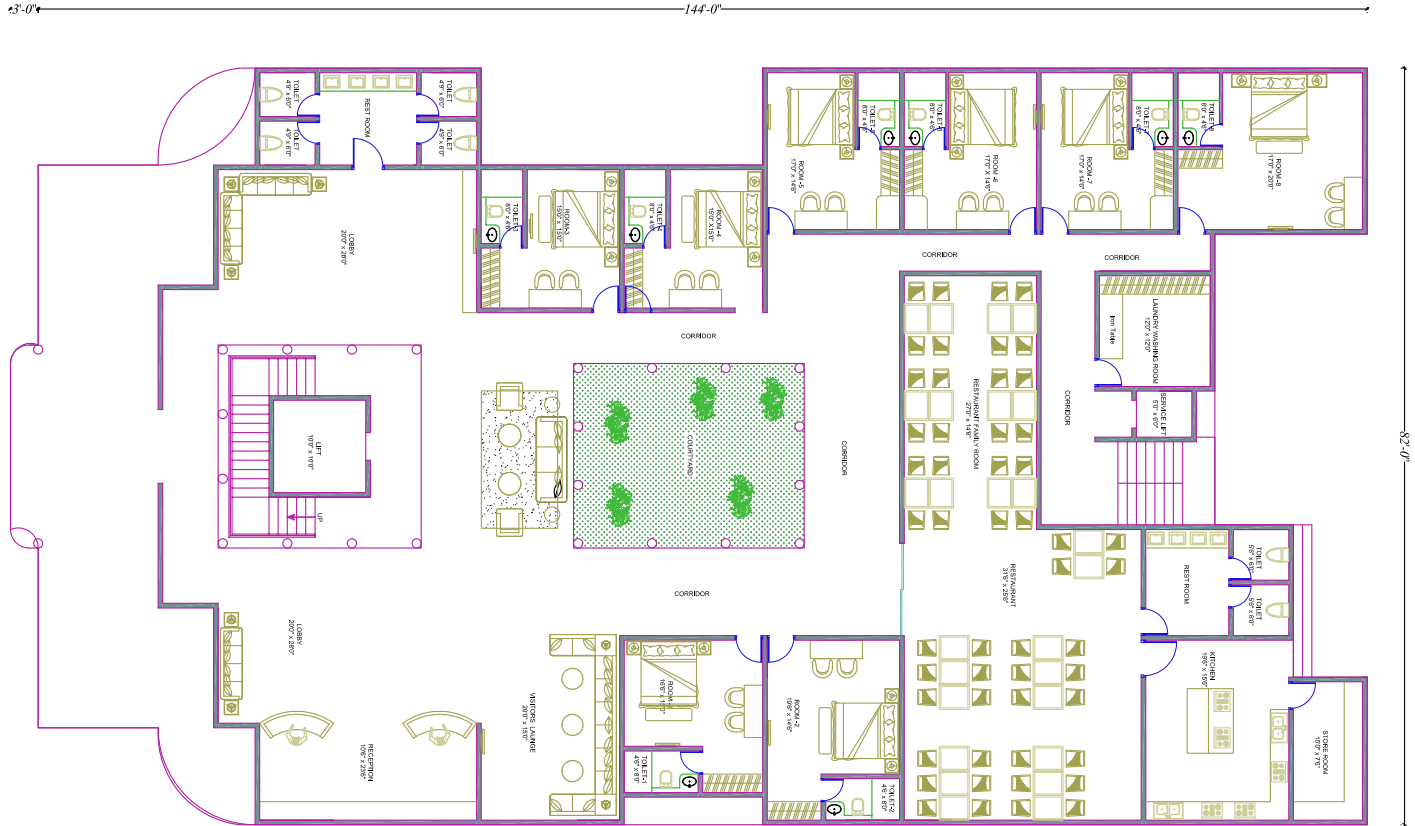
The Academy is the police training institution for the entire state. Span over 133 acres, the institute provides training to new police recruits in the ranks of Deputy Superintendents, Police Inspectors, Assistant Police Inspectors and Sub Inspectors. It also provides training in various fields to serving state police officers.

FIRST IT CITY IN BIHAR TO BE SET UP IN RAJGIR SOON!

The Government of Bihar has just acquired 100 acres land to build an IT City near Nalanda university and also develop India's first multimedia hub which will provide advance courses in different spheres of IT.

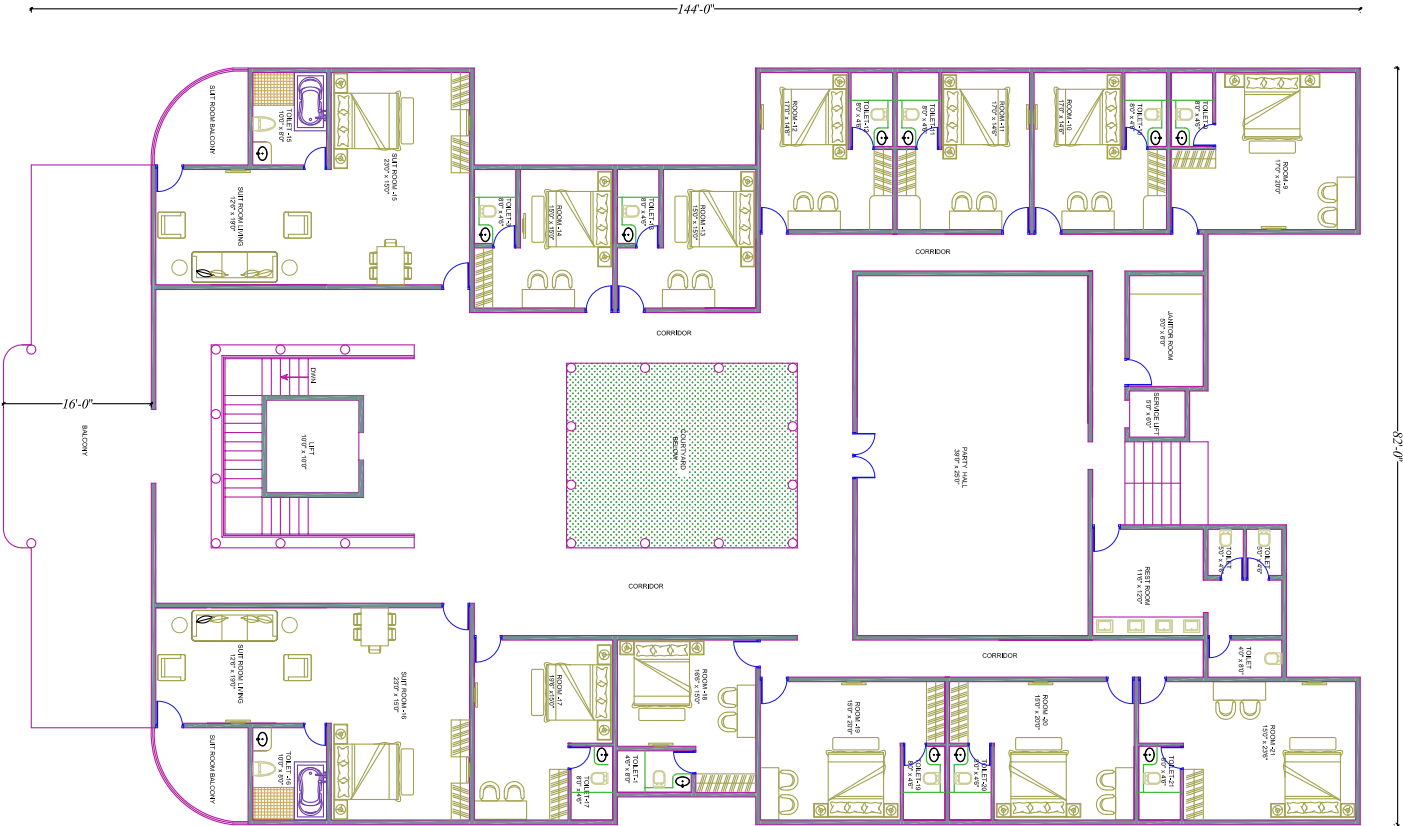
PROPOSED GROUND FLOOR PLAN

Area - 10513 Sft



PROPOSED FIRST FLOOR PLAN

Area - 10513 Sft



Date: 27-01-2023

**Estimate For The Proposed Building For Hospitality Ministry
(Life Tree Inn) At Bodhgaya, Bihar , India.**

SL#	Items	Size	Unit	Rate	Amount
1	For Land	1.5	Acre	8,67,00,000.00	13,00,50,000.00
2	Land registration	1	Ls	1,20,00,000.00	1,20,00,000.00
3	G.F Construction	10513	Sft	2,500.00	2,62,82,500.00
4	F. Fl Construction	10513	Sft	2,700.00	2,83,85,100.00
5	Compound wall	1384	Rft	850.00	11,76,400.00
6	Under ground water storage	20000	Lts	15.00	3,00,000.00
7	Transformer	1	Ea	10,00,000.00	10,00,000.00
8	Storage water tank	50000	lts	20.00	10,00,000.00
9	land scape and lighting	1	Ls	7,00,000.00	7,00,000.00
10	Sound proofing	1	Ls	16,00,000.00	16,00,000.00
			TOTAL		20,24,94,000.00
<i>Total Indian Rupees (Twenty crore Twenty four lakhs ninety four thousand)</i>					
<i>Total U S dollars 2469439.00</i>					

For Ebenezer Engineers & Builders

Proprietor

TIMELINE

The timeline will follow the above project phase will be depended on the availability of resources and the complexity of the construction and operation of the hotel. However, we expect to complete the construction of the hotel within one year of the start of the project and to begin operating the hotel and providing hospitality services to Buddhist pilgrims within two years of the start of the project.

PLAN & BUDGET

A detailed plan and budget of this project has been provided in this page. This was developed in conjunction with the design and construction plan for the hotel. This budget includes estimates for land purchase, the cost of construction, furniture, fixtures, equipment and other costs associated

with the operation of the hotel such as renovation of the exterior and interiors and more. Please turn over the page to find the plan and budget.

RISKS

We expect very few risks such as the risk of construction delays, the risk of financial difficulties, and the risk of cultural misunderstandings or conflicts. We will work with local partners and experts to minimize these risks and to develop contingency plans as needed. Once the project gets on track, it will be a self-sustaining model project.

CONCLUSION

This project proposal seeks to establish a hospitality ministry at Bodh Gaya - Bihar, the birthplace of Buddhism in India through a hotel. Through this ministry, we hope to provide a comfortable and safe environment for Buddhist pilgrims to stay and to share the Gospel of Jesus Christ with them. We also seek to equip the local believers with the necessary training and resources to engage in local and global ministry among Buddhists. Finally, this project aims to ensure the long-term sustainability of the project through a finance plan. We are in prayer for the project 'Reach Buddhists Locally and Globally'.

Hope India Mission's extensive 40-year experience in nurturing educational institutions across seven campuses, with over 3500 children from diverse faiths, and planting churches in nine North Indian states, supported by 300 plus dedicated staff and hundreds of volunteers, stands as a remarkable testament to our legacy and enduring asset.



Life Tree Hotel - Bringing Peace, Reconciliation, and Joyful Salvation to Nations; One Disciple at a Time, for Abundance of Life...



USA ADDRESS

HOPE INDIA MISSION
1403, Winchester Road Decatur, IN 46733 USA
EMAIL - naomi_muselman@muselman.com
WEBSITE - www.hopeindiamission.org



CANADA ADDRESS

Hope India Mission Society
1872 Bradner Road Abbotsford, BC V4X 1C3 BC
Canada
EMAIL - aarc2@shaw.ca

All the trees of the forest will know that I the Lord bring down the tall tree and make the low tree grow tall. I dry up the green tree and make the dry tree flourish

Ezek 17:24